

SM GAMA ENGINEERING COMPANY PROFILE

INDUSTRIAL CLEANING SERVICES AND CLEANING EQUIPMENT HIRE



SM GAMA ENGINEERING COMPANY PROFILE

COMPANY DETAILS:

1. Company Name : SM GAMA ENGINEERING (PTY) LTD
2. Registration number : 2018/385830/07
3. Financial year end : FEBRUARY
4. Form of business : Private Company
5. Trading sector : Mining, Power Generation and Petro-Chemical
6. Number of members : 2
7. CSD Number : MAAA0653941
8. Tax reference number : 9590444189
9. CIDB Number : 10173956
10. Business Address : 2827 Kwaka Street, Sakhile
Standerton 2431
11. VENDOR NO'S : ESKOM V/N 11091040/ SERITI V/N 4003430

DIRECTORS

MR. SIBUSISO GAMA
DIRECTOR
MOBILE: 076 9120667

MS NTHABISENG MOFOKENG
DIRECTOR
MOBILE: 073 189 9987

Email address: nthabi@bitrix24.com





Pumps for sale



1. COMPANY OPERATIONS STATEMENT

- 1.1 The operations of SM GAMA ENGINEERING (PTY) LTD is planned to ensure the satisfying service is rendered to clients in every operating hour without causing any delays of services delivery.
- 1.2 Proper appointment of personnel to key positions of strategic management are made with carefulness, which includes the professional appointments of key operational staff such as administrator/and chief operating officer.
- 1.3 The managing director who is ensuring the implementation of strategic long term projects and policies of the company- is always available to make sure he deals with any inconveniences caused from any operational angle.
- 1.4 SM GAMA ENGINEERING (PTY) LTD company do work overtime if there is a need for special projects to be completed within a specified period; this is conducted through professionally planned working shifts through proper communication with employees.
- 1.5 Working days are from Mondays to Fridays, except for a need to work on Saturdays- but recognized public holidays are respected by our business which is considered by law, day offs.
- 1.6 All employees and management personnel report to the MR SIBUSISO GAMA as a MANAGING DIRECTOR and approves all projects budgets and planning.
- 1.7 Business working hours

Start	at 07H00 till 17H00
Tea time:	at 09H00 till 9H30
Lunch:	at 13h00 till 13H45

Working days	from Monday till Friday
	Saturday 07H00 till 13H00
	Sunday/holiday <i>(overtime through special arrangements)</i>

VISION

TO DELIVER QUALITY BEST RATED CONSTRUCTION AND ENGINEERING SERVICES WITHOUT COMPROMISING EXCELLENCE

MISSION

To become an integrated construction & engineering service company based on the creation of a shareholder's wealth by maximizing profits and optimizing growth
To apply stringent business standard and ethics in the highest manner, thereby ensuring the sustainability growth of our business
To facilitate the growth and training of historically disadvantaged communities through our employment and policies development for prospective employees
To become the enterprise of choice towards striving to render best quality services

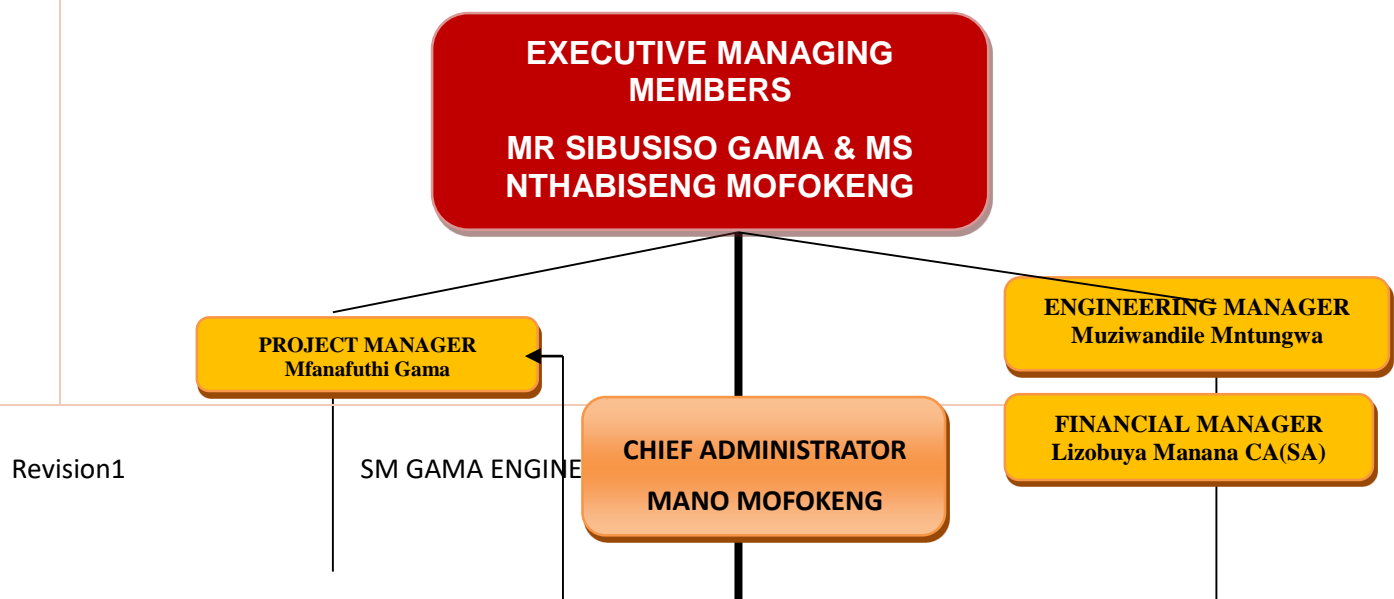
OBJECTIVES

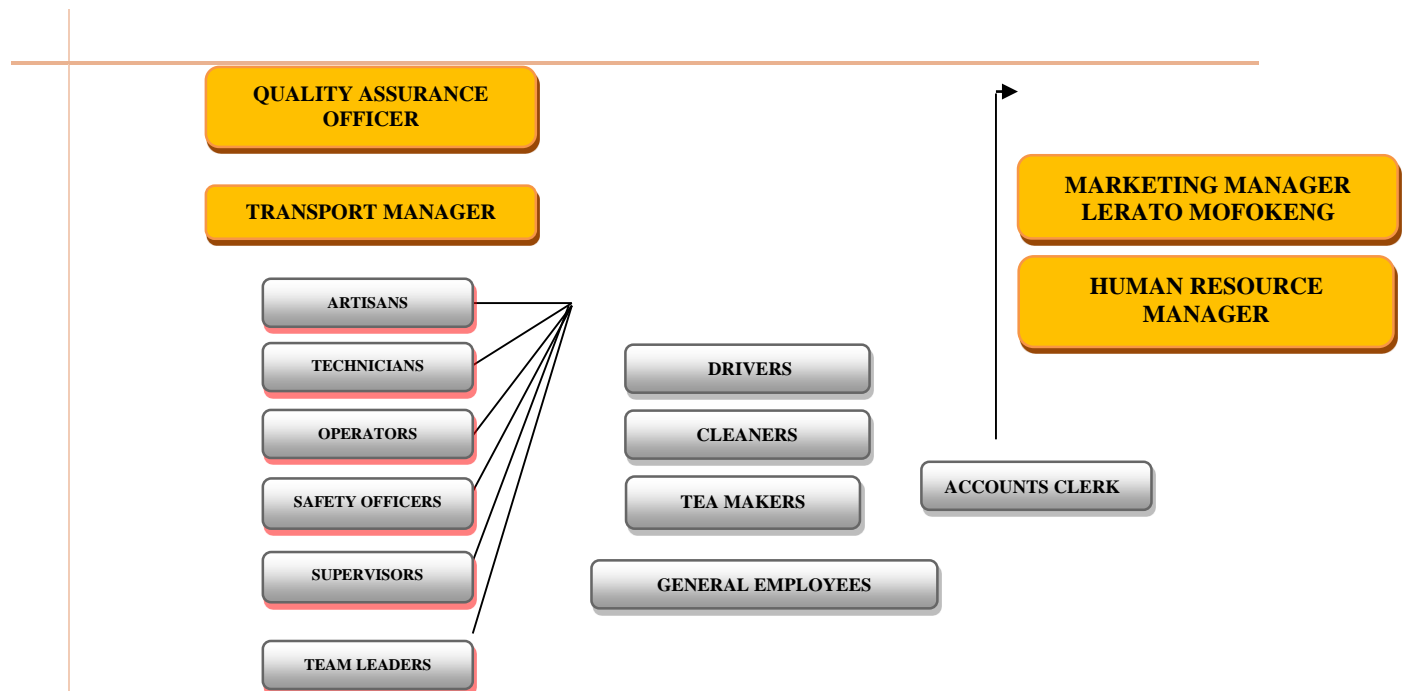
Create permanent jobs for local people & to train them to obtain technical required skills to be employable on future job opportunities
To consider the expansion of our company through the establishment of company branches within a period of three years
To achieve not material benefits, but sustainable and respected company for the benefits of improving the reputation of our business
To succeed in creating the company's social investment policy aimed at uplifting our communities.

COMPANY VALUES

For the corporate running of the company and for instilling high standard of performance SM GAMA ENGINEERING (PTY) LTD undertakes the following values guiding the behavior of both the company and its personnel through:

- ❑ Quality service
- ❑ Professionalism
- ❑ Expertise





DUTIES & AUTHORITY

Authority : Managing Director

Position> Managing Director

(Mr. Sibusiso Gama -as executive managing member of the company

Duties >

- ✓ As head of the engineering department and the company
- ✓ Issue instructions & procedures for operations to staff members
- ✓ Research and procure engineering & construction projects
- ✓ Plan the entire implementation of the projects
- ✓ Write project quotes/cost and estimation
- ✓ Appoint and assign duties to subordinate for project execution
- ✓ Convene and chair meetings of the executive management
- ✓ Dismiss and allocate resources to all projects

✓

CUSTOMER MANAGEMENT POLICY

SM GAMA ENGINEERING (PTY) LTD has placed the customer relationship and treatment policy as the highest policy to ensuring proper communication with its customers.

Our company, every employee has an obligation to strive towards making the customer happy and exceed customer expectations in terms of service required by a customer.

Though customer relations and treatment is sometimes a challenge, our company has set the following procedures towards the smooth treatment and serving our customers with professionalism and with quality services.

Customer complaints>

We have decided to swallow our pride in all forms and regard our customer as always right when complains arises to ensure our customers are treated with dignity & respect.

Customer service>

We have decided that, our services rendered to our customers are at least with 98% with quality & guarantee service assurance.

Delivery>

We have thus decided that, our company should exceed customer expectations and make sure we exceed delivery time, with punctuality without making our customer wait too long for our product.

Customer treatment survey>

We have decided to take at least 1 month in a year-to conduct our customer survey in terms of the following

- ☐ Taking customer complains
- ☐ Allowing customers to rate our services
- ☐ By conducting telephonic after-service treatment
- ☐ By sending letters of appreciation for their support

COMPANY SERVICE QUALITY STATEMENT

-
- SM GAMA ENGINEERING (PTY) LTD is committed and always considering quality services as the best measuring milestone to the satisfaction of clients and towards building business service track record in our multipurpose services.
 - SM GAMA ENGINEERING (PTY) LTD always strives to hire highly motivated Labor force, which ensures quality job is being rendered to clients and in which the managing director will ensure among other things to oversee the production and execution of quality work is done accordingly and to make sure procedures and job specifications and descriptions are correctly followed and carried out properly.
 - SM GAMA ENGINEERING (PTY) LTD takes seriously the following measures of our QUALITY SERVICE POLICY throughout the implementation of our projects>
-

- ❑ Safety of the workers with enough working protective clothing (PPEs).
- ❑ Quality of the service rendered is checked by an appointed **QUALITY ASSURANCE OFFICER** for quality purposes and to adhere to the ISO 9001 standard & procedures.
- ❑ Production of service always checked throughout the process by the **production manager**.
- ❑ Ensure proper adherence to industrial related permits/services licenses.
- ❑ Keep our resources/equipment in good shape and timeously ensure continuous production.
- ❑ Ensuring customer satisfaction to the extent of making follow up to customers to ensure their happiness and satisfaction.
- ❑ Working condition and environment are attended to ensure effective working conditions are complying with safety measures.
- ❑ Employing of productive and experience-proven staff to ensure smooth running of the company towards the achievement of its goals.

COMPANY SERVICES

SM GAMA ENGINEERING (PTY) LTD services have been carefully selected to suit the needs of the market targeted and demands of the industry in which our company aims to operate.

The business services are measured at competitive rate of our prices and charges which involves the provision of quality services as follows:

- **INDUSTRIAL SERVICES**
- **CLEANING EQUIPMENT HIRE**

UNPACKING & EXPLANATION OF OUR SERVICES

CLEANING SERVICES

INDUSTRIAL CLEANING

POWER

- VACUUMING
- HYDRO JETTING
- BOBCATS FOR HIRE
- HEAVY DUTY VACUUM
- TIPPER TRUCK
- BOILER CLEANING
- SUMP AND DEADSPACES CLEANING
- BOILER WASHING
- MAINTENANCE OF MOBILE TOILETS



MECHANICAL SERVICES

Valve Services

- We refurbish, install and commission a Variety of valves
- Technical Consultancy on Valves
- Inspection and Maintenance of Valves
- Reverse Engineering
- Inventory Management
- Spare Parts
- On-sight Services

Pump Services

- We offer pump maintenance solutions
- Pump Overhaul
- The pump is disassembled and critical clearances and dimensions are recorded
- All components are then prepared for sand blasting and cleaning
- Inspection on wear, corrosion and wash-out damage is performed
- Upon completion of inspection, we provide a detailed scope of work for repairs

-
- All components in need of replacement or repairs are replaced or repaired
 - The pump is painted and re-assembled back to the original equipment manufacturer's specifications

GENERAL SUPPLY

- Protective Work wear (PPE)
- Plugs, Sockets & Connectors for Mining Application
- Turnkey Hydraulics
- Winches And Sheaves
- Bearings And Bushes
- Plant Hire
- Installation ready couplings

COMPLIANCES

Our company has complied with the following statutory registrations

1. **Companies and intellectual commission (CIPC)**
 - ❑ Company registration
2. **South African revenue services (SARS)**
 - ❑ Tax
3. **Labour department and compensation commission**
 - ❑ UIF
 - ❑ Workman's Compensation (COIDA)
4. **Construction industry**
 - ❑ CIDB

BUSINESS WORKING SAFETY

SM GAMA ENGINEERING (PTY) LTD considers safety as the utmost important issue in the daily working hours of the Company.

The management of the company working together with its Labour force, will be together responsible for the working safety of the entire company through ensuring safety measures are attended to for everyone's sake including that of the company.

As the management team, we are aware and support by adhering to the acts of occupational health & safety conditions set down by government to make sure both the lives of our workers and those around the working place are safe, including the surrounding community

We have a policy that our workers – as stipulated by Labour laws/should register for workman's compensation and UIF etc., in which we do register our workers to the department of Labour so that they qualify for workman's compensation if injuries occur

The working force/after being hired by our business -is covered with the following items for their safety.

- ❑ Overalls
- ❑ Goggles
- ❑ Hand gloves
- ❑ Safety boots
- ❑ Hippos
- ❑ Proper working tools
- ❑ Etc.

SM GAMA ENGINEERING (PTY) LTD regards the health and safety of its employees as said above- with the commitment and examples wishes to be set by our company by complying with SHE POLICY. The management will respect the following principles:

- ❑ Safe and hygiene working condition
- ❑ Regular health and safety checks
- ❑ Planning new and effective measures to curb health & safety events
- ❑ In-house health and safety training
- ❑ Identifying and rectifying of unsafe work practices
- ❑ Boost morale and ensure a conducive working environment

The management will continue to ensure that good procedure of nursing minor injuries is catered for with our wall mounted box of FIRST AID/ for attending quickly to the injured employees which will be placed at our production cubicle/sites and at some stage placed at the working site

We encourage our employees to report every minor injury immediately to the FIRST AID officer who is always present to take care of those injuries and report them to the production manager.

BUSINESS WORKING ENVIRONMENT

SM GAMA ENGINEERING (PTY) LTD attaches itself to the policy of greatest importance to the conservation of our public environment in which the wellbeing of people around and the places in which the business is conducting its service are respected.

We keep our working environment as clean as possible/ this is done so with the cooperation and working together between employees and management.

We make sure the place or environment in which we conduct our business is garbage free without contaminating the working environment across the spectrum of our business operations

During the event of dumping wastages and hazardous conditions and substances / we certainly respect certain laws of environment acts promulgated by our Government with necessary precautions taken into cognizance by our company for the health of our employees and that of the community without making any compromise.

The laws and environmental acts which we highly respect and prepared to follow their guidelines, are setting out the following as prohibitions within the working environment among others:

- ☐ Smoking in designated areas
- ☐ Disposal of wastes
- ☐ Air pollution
- ☐ Dumping of papers and rubbish
- ☐ Releasing of dangerous chemical substances
- ☐ Etc.






1.

COMPANY SOCIAL RESPONSIBILITY POLICY

Our Objectives

Our primary objective is to seek to maximise shareholder's value overtime which is best achieved through an intelligent decision making processes with regard to the interest of our community economic development plans that underpin our commercial performance through building sustainable investment and development trust in the wider community.

Social responsibility values focusing on the community development

-  *Eradicate greediness*
-  *Development and empowerment of our people*
-  *Health, safety and quality assured environmental responsibility*
-  *Community investments*
-  *Mutual respect, understanding, and appreciation*

Our community investment plan will focus on academic development; reason is that according to our view, black townships schools are still lacking behind in complete educational progress and for that

reasons, we decided on our board meeting that our focus shall be to enhance and support local schools to develop them into their potentials.

Towards the community

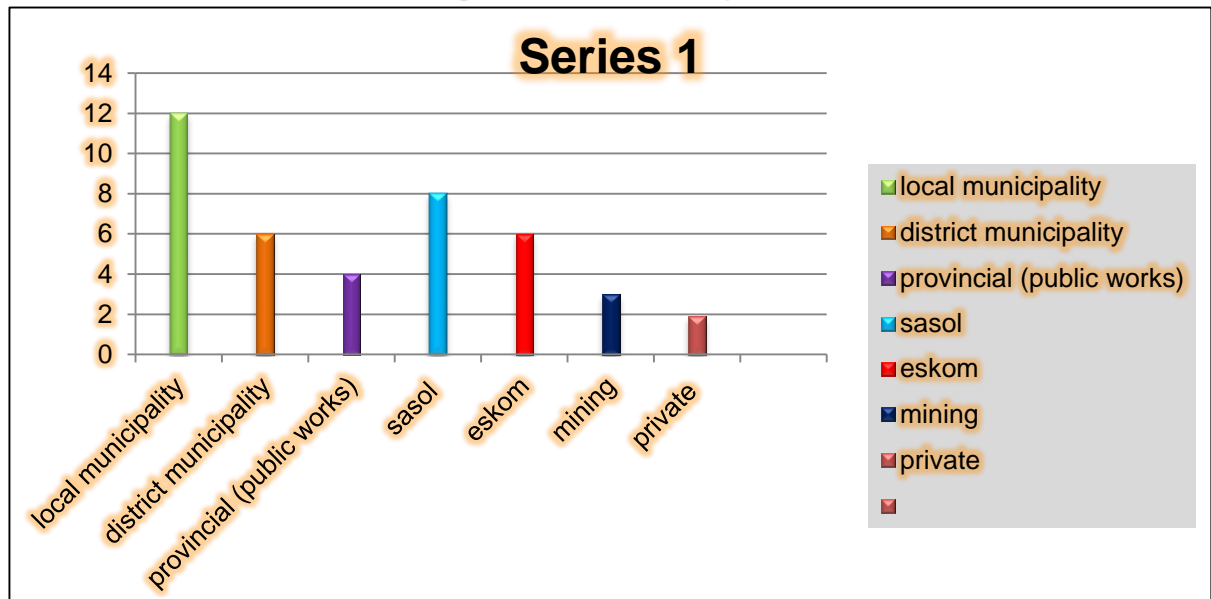
We aim at promoting strong relationship with our society, and enhance the capabilities of the community of which we are part of. Our support for community projects will remain the priorities of our local people, sustainability and cost effectiveness.

5% from our net profit has been decided by the board members for the investment into the following programs that will uplift and improve our community, namely>

*Providing Educational bursary assistance to local schools-especially in physical and math subjects
Making donations to community based organisation for destitute children*

OUR TARGETED MARKET SHARE

**We have successfully penetrated some of the following markets
and established good business relationship**



Work Executed

Project Name	Client	Value	Completion Date	Contact Person
Supply and installation of septic tanks at Standerton	Droom Groot (Pty) LTD	R114.000.00	22/01//2019	Twoboy Mkwebane Director 071 940 5303
SUPPLY OF BREAKPADS	SERITI COAL	R44.600	OCTOBER 2021	012 622 4350 PROCUREMENT ENQUIRIES
MIANTENANCE OF PORTAL TOILETS	SERITI COAL	R2.400.650	1/10/2023	HLULANI NTIMBANI END USER 017 749 0876
Supply of Reciprocating pumps	Eskom Tutuka PowerStation	R786.606.08	29/03/2022	Dineo Maepa Buyer 017 749 5775
Supply of Bearing Housing and seals	Eskom Majuba PowerStation	R330.339.00	25/10/2021	Lebohang Dhlamini Buyer 017 799 2708
Disinfection of motor vehicles	Eskom Majuba PowerStation	R345 600	ongoing	Fanie Mahlanga Contracts Manager 084 511 4043
BOILER CLEANING AT TUTUKA	DUBANDLELA SOLUTIONS	R220.000	01/11/2021 TO 14/12/2021	LUSHOZI SUPERVISOR 076 157 3118
Supply and Installation of Jojo Tanks	Dep Of Correctional Services	R137 000.00	15/03/2019	Mr Dlodlu Maintenance supervisor 072 779 4666

BOILER FLOOR CLEANING AT MAJUBA	KOLIMO LOGISTICS	R123,400	04/01/2022 TO 11/02/2022	SANELE DIRECTOR 083 355 0497
BOILER CLEANING AT MAJUBA	KOLIMO LOGISTICS	R240,760	03/03/2022 TO 05/20/2022	SANELE DIRECTOR 083 355 0497
PRESEPS AND DEAD SPACES CLEANING	THAPHIWE LOGISTICS	R426,648	ONGOING	AUBREY MANAGER 082 714 7278
COAL BELT CLEANING	ZITHOLAMA	RATE BASED	ONGOING	EVANS 063 779 9264
ROPE ACCESS CLEANING	GAMELA TRAINING	RATE BASED	ONGOING	LUSHOZI SHEZI 073 104 4672
SUPPLY OFF PISTON PUMPS	ESKOM SOC	R987.430	10/11/2022	HLENGIWE LINGANI 017 749 5596